



**LEENDERS**

SINCE 1979

**CYLON**  
INSTALLATION EN

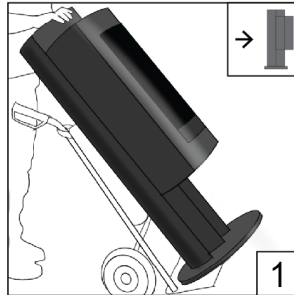


## Points of attention installation Cylon

### Transport

Place a protective blanket between the fireplace and the hand truck.

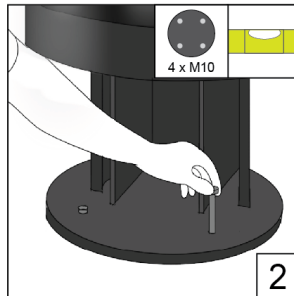
Place the fireplace on the handtruck with its **backside** against the blanket.



### Adjustments

Place the M10 hex counterscrews in the 4 sockets.

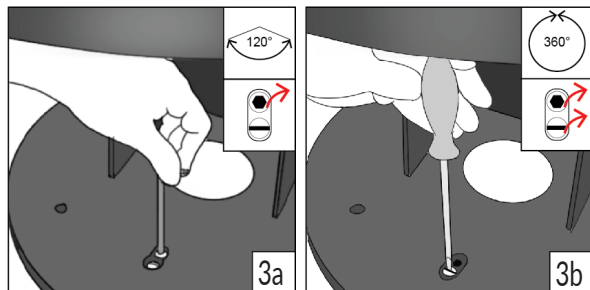
Level the fireplace (hex screw nr. 5).



### Setting turning angle

120° :remove only the hex counterscrew (the rearmost).

360°: remove both the screws.

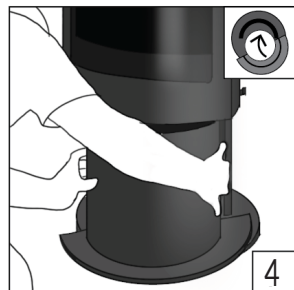


### Fastening base cover

Open the air control slide.

Place the finishing cover behind the air control slide and turn it left to close it.

Then fit the back of the finishing cover.



### Check interior

Parts in the interior and combustion chamber can shift during transport. Remove the heat shield. Check if the ventilation pipe above the stove is seated properly = slide securely into position underneath. Check if the two vertical ventilation pipes between the stones are properly seated underneath. Replace the heat shield.



## General instructions and regulations

### Installation

To secure the warranty, the Cylon must be installed by a properly qualified person employed by a dealer recognized by Leenders. See [leenders.nl](http://leenders.nl) for a current list of addresses of recognized dealers or contact the manufacturer.

The stove is susceptible to scratching. Handle with care.  
After installation, check the draught by burning some kindling wood.

### Use

- All local regulations including those referring to national and European standards must be observed when installing the appliance.
- Ensure there is sufficient ventilation/air supply in the room where the stove is installed. Air extractors such as a cooker hood may cause problems due to flue gases escaping from the stove into the room.
- The stove is suitable and prepared for connection to a fresh air supply.
- The stove is suitable for use with a chimney ventilator.
- The appliance is not suitable for a shared flue system.
- The appliance must be installed on a floor having sufficient bearing capacity.
- Ensure adequate access for cleaning the appliance, the flue-gas connection and the chimney.

### Safety instructions

- Glass is quite susceptible to breaking and broken glass is quite sharp. Take appropriate measures.
- For general safety, we refer to the VCA guidelines.
- Note: After installation, ensure there is no inflammable and/or explosion-hazardous material in or on the stove such as a spray can, packing material and the like.

### Distance to combustible materials

- Back; 20 cm
- Side; 20 cm
- Front; 85 cm

### Specifications Cylon

- Nominal power = 9.9 kWh
- Heat output capacity = 9.9 kWh
- Flue gas mass flow = 9.2 g/s
- Appliance weight = 140 kg
- Minimum chimney draught = 0.12 mbar
- Flue gas temperature directly over the stove = 237 °C
- Energy Efficiency 81,1%, class A+, index 108,6

